



User Manual

V-417.XX6211E1 HIGH-LOAD LINEAR STAGE

Contents

| | | |
|----------|---|-----------|
| 1 | Legal Information..... | 4 |
| 2 | Introduction..... | 5 |
| 2.1 | About this Document..... | 5 |
| 2.1.1 | Objective and Target Group..... | 5 |
| 2.1.2 | Explanation of Symbols..... | 5 |
| 2.1.3 | Figures..... | 6 |
| 2.1.4 | Downloading Manuals..... | 6 |
| 2.2 | European Declarations of Conformity..... | 6 |
| 2.3 | Customer Service Department..... | 7 |
| 2.4 | Old Equipment Disposal..... | 7 |
| 3 | Safety..... | 8 |
| 3.1 | Intended Use..... | 8 |
| 3.2 | General Safety Instructions..... | 8 |
| 3.3 | Organizational Measures..... | 9 |
| 3.3.1 | User Manual..... | 9 |
| 3.3.2 | General Personnel Qualification..... | 9 |
| 4 | Product Description..... | 10 |
| 4.1 | Model Overview..... | 10 |
| 4.2 | Product Labeling..... | 10 |
| 4.2.1 | Type Plate..... | 11 |
| 4.3 | Overview..... | 11 |
| 4.3.1 | Base Body..... | 11 |
| 4.3.2 | Drive..... | 12 |
| 4.3.3 | Drag Chain..... | 12 |
| 4.3.4 | Purge Air System..... | 12 |
| 4.4 | Direction of Motion..... | 13 |
| 4.5 | Scope of Delivery..... | 14 |
| 4.6 | Optional Accessories..... | 14 |
| 4.7 | Suitable Electronics..... | 14 |
| 5 | Unpacking..... | 16 |
| 6 | Installation..... | 18 |
| 6.1 | Mounting the V-417.xx6211E1..... | 18 |
| 6.1.1 | Mounting the V-417.xx6211E1 from Above..... | 18 |
| 6.2 | Connecting the V-417.xx6211E1 to the Protective Earth Conductor | 19 |
| 6.3 | Building a Multi-Axis System..... | 21 |
| 6.3.1 | Building an XY Multi-Axis System..... | 21 |
| 6.4 | Mounting the Load..... | 21 |
| 6.5 | Connecting the V-417.xx6211E1..... | 23 |

| | | |
|-----------|---|-----------|
| 7 | Startup and Operation..... | 24 |
| 7.1 | Determining the Operating Parameters..... | 24 |
| 7.1.1 | Calculating the Nominal Current According to the Ambient Temperature..... | 24 |
| 7.2 | Starting and Operating the V-417.xx6211E1..... | 24 |
| 8 | Maintenance..... | 27 |
| 8.1 | Maintenance Run..... | 27 |
| 8.2 | Cleaning..... | 27 |
| 8.3 | Moving the Motion Platform by Hand..... | 28 |
| 9 | Troubleshooting..... | 29 |
| 10 | Transportation..... | 31 |
| 10.1 | Attaching the Transport Safeguard..... | 31 |
| 10.2 | Attaching the Carrying Aid..... | 32 |
| 10.3 | Packing the V-417.xx6211E1..... | 33 |
| 11 | Technical Data..... | 34 |
| 11.1 | Specifications..... | 34 |
| 11.1.1 | Technical Data V-417..... | 34 |
| 11.1.2 | Reference Switch Specifications..... | 36 |
| 11.1.3 | Limit Switch Specifications..... | 36 |
| 11.1.4 | Temperature Sensor Specifications..... | 37 |
| 11.2 | Maximum Ratings..... | 39 |
| 11.3 | Ambient Conditions and Classifications..... | 39 |
| 11.4 | Dimensions..... | 40 |
| 12 | Appendix..... | 41 |
| 12.1 | Pin Assignment..... | 41 |
| 12.1.1 | Drive Connector..... | 41 |
| 12.1.2 | Sensor Connector..... | 42 |
| 13 | Glossary..... | 43 |

1 Legal Information



The following company names and brands are registered trademarks of Physik Instrumente (PI) GmbH & Co. KG:

PI®, PIC®, NanoCube®, PICMA®, PIFOC, PILine®, NEXLINE®, PiezoWalk®, PicoCube®, PiezoMove, PIMikroMove, NEXACT®, Picoactuator®, PInano®, NEXSHIFT®, PITOUCH®, PIMag®, PIHera, Q-Motion®

© 2024 Physik Instrumente (PI) GmbH & Co. KG, Karlsruhe, Germany. The text, photographs, and drawings in this manual are protected by copyright. With regard thereto, Physik Instrumente (PI) GmbH & Co. KG reserves all rights. The use of any text, images and drawings is permitted only in part and only when indicating the source.

Original instructions

First print: 2/14/2024

Document number: V417M0005en, ASt

Subject to change. This manual is superseded by any new release. The latest respective release is available for download on our website (www.pi.ws).

Publisher:

PI miCos GmbH
Freiburger Straße 30
79427 Eschbach
Germany

info@pimicos.de
www.pi.de

Customer service department:

Physik Instrumente (PI) GmbH & Co. KG
Auf der Römerstraße 1
76228 Karlsruhe
Germany

service@pi.de
www.pi.de

2 Introduction

2.1 About this Document

2.1.1 Objective and Target Group

This user manual contains the information needed for the intended use of the V-417.xx6211E1.

Basic knowledge of closed-loop systems, motion control concepts, and applicable safety measures is assumed.






2.1.2 Explanation of Symbols

This chapter explains the symbols and markings used by PI in their user manuals.

Typographic Conventions

| Symbol / label | Meaning |
|----------------|---|
| 1. 2. | Action consisting of one or several steps with strict sequential order |
| ► | Action consisting of one or more steps without relevant sequential order |
| ■ | Lists |
| p. 5 | Cross-reference to page 5 |
| RS-232 | Label on the product indicating an operating element (example: RS-232 interface socket) |

Symbols Used

| Symbol / label | Meaning |
|---|---------------------------------|
|  | Warning of electrical voltage |
|  | Hazard symbol for a hot surface |
|  | Risk of crushing |
|  | Entanglement hazard |
|  | General hazard symbol |



DANGER

Dangerous situation

Failure to comply could lead to death or serious injury.

► Precautionary measures for avoiding the risk.

**WARNING****Dangerous situation**

Failure to comply could lead to serious injury.

- Precautionary measures for avoiding the risk.

**CAUTION****Dangerous situation**

Failure to comply could lead to minor injury.

- Precautionary measures for avoiding the risk.

**NOTICE****Dangerous situation**

Failure to comply could lead to material damage.

- Precautionary measures for avoiding the risk.

Information

Additional information on the V-417.xx6211E1 that can affect your application.

2.1.3 Figures

For better understandability, the colors, proportions and degree of detail in illustrations can deviate from the actual circumstances. Photographic illustrations may also differ and must not be seen as guaranteed properties.

2.1.4 Downloading Manuals**Information**

If a manual is missing or problems occur with downloading:

- Contact our [customer service department \(p. 7\)](#).

Downloading Manuals

1. Open the website www.pi.ws.
2. Search the website for the product number (e.g., V-417).
3. Click the corresponding product to open the product detail page.
4. Click the **Downloads** tab.
→ *The manuals are shown under **Documentation**.*
5. Click the **ADD TO LIST** button for the desired manual and then click **REQUEST**.
6. Fill out the request form and click **SEND REQUEST**.
→ *The download link will then be sent to the email address entered.*

2.2 European Declarations of Conformity

For the V-417.xx6211E1, declarations of conformity were issued according to the following European statutory requirements:

- Low Voltage Directive
- EMC Directive
- RoHS Directive

The standards applied for certifying conformity are listed below.

- Safety (Low Voltage Directive): EN 61010-1
- EMC: EN 61326-1
- RoHS: EN IEC 63000

2.3 Customer Service Department

For enquiries and orders, contact your PI miCos representative or send us an [email](#).

If you have any questions concerning your system, provide the following information:

- Product and serial numbers of all products in the system
- Firmware version of the controller (if applicable)
- Version of the driver or the software (if applicable)
- Operating system on the PC (if applicable)

If possible: Take photographs or make videos of your system that can be sent to our customer service department if requested.

Customer service address:

Physik Instrumente (PI) GmbH & Co. KG
Auf der Römerstraße 1
76228 Karlsruhe
Germany

service@pi.de
www.pi.de

2.4 Old Equipment Disposal

In accordance with EU law, electrical and electronic equipment may not be disposed of in EU member states via the municipal residual waste.

Dispose of your old equipment according to international, national, and local rules and regulations.

In order to fulfil the responsibility as the product manufacturer, PI miCos undertakes environmentally correct disposal of all PI miCos equipment free of charge, if it was made available to the market after August 13, 2005.

Any old PI miCos equipment can be sent free of charge to the following address:

PI miCos GmbH
Freiburger Straße 30
79427 Eschbach
Germany

info@pimicos.de
www.pi.de



3 Safety

3.1 Intended Use

The V-417.xx6211E1 is a laboratory device as defined by DIN EN 61010-1. It is intended for indoor use and use in an environment that is free of dirt, oil, lubricants, and liquids.

In accordance with its design, the V-417.xx6211E1 is intended for positioning, adjusting and shifting loads in one axis at various velocities. The V-417.xx6211E1 is **not** intended for applications in areas, in which a failure would present severe risks to human beings or the environment.

The V-417.xx6211E1 is intended for operation with a horizontally aligned motion axis.

The intended use of the V-417.xx6211E1 is only possible when completely mounted and connected. The thermal protection sensor built into the V-417.xx6211E1's motor must be evaluated and monitored. The V-417.xx6211E1 must be operated with suitable electronics. The electronics are not in the scope of delivery of the V-417.xx6211E1.

The V-417.xx6211E1 may not be used for purposes other than those stated in this user manual. The V-417.xx6211E1 may only be used in compliance with the technical specifications and instructions in this user manual.

3.2 General Safety Instructions

If the protective earth conductor is missing or not properly connected, risk of dangerous touch voltages on the V-417.xx6211E1 in the event of malfunction or failure of the system. If there are touch voltages, touching the V-417.xx6211E1 leads to serious injuries or death by electric shock.

- ▶ [Connect the V-417.xx6211E1 to a protective earth conductor before startup \(p. 19\).](#)
- ▶ Do not remove the protective earth conductor during operation.
- ▶ If the protective earth conductor has to be removed temporarily (e.g., for modification), reconnect the V-417.xx6211E1 to the protective earth conductor before restarting.

The V-417.xx6211E1 contains permanent magnets that could impair the function of heart pacemakers and electronic implants.

- ▶ Make sure that people with heart pacemakers and / or electronic implants do not have access to the V-417.xx6211E1.

The magnets in the V-417.xx6211E1 can damage parts susceptible to magnetic influences, e.g., magnetic data carriers and electronic devices.

- ▶ Make sure that there are no objects sensitive to magnets within a radius of at least 10 cm around the V-417.xx6211E1.

The magnets in the V-417.xx6211E1 can attract magnetizable parts, e.g., loose screws. Objects attracted can damage the V-417.xx6211E1.

- ▶ Make sure that there are no movable, magnetizable objects within a radius of at least 10 cm around the V-417.xx6211E1.

Mechanical forces can destroy the V-417.xx6211E1.

- ▶ Avoid knocks that affect the V-417.xx6211E1.
- ▶ Do not drop the V-417.xx6211E1.

The V-417.xx6211E1 is built according to state-of-the-art technology and recognized safety standards. Improper use of the V-417.xx6211E1 may result in personal injury and/or damage to the V-417.xx6211E1.

- ▶ Use the V-417.xx6211E1 only for its intended purpose and when it is in perfect condition.
- ▶ Read the user manual.
- ▶ Eliminate any malfunctions that may affect safety immediately.

The operator is responsible for installing and operating the V-417.xx6211E1 correctly.

3.3 Organizational Measures

3.3.1 User Manual

- ▶ Always keep this user manual available with the V-417.xx6211E1. The latest versions of the user manuals can be [downloaded \(p. 6\)](#) at www.pi.ws.
- ▶ Add all information from the manufacturer such as supplements or technical notes to the user manual.
- ▶ If you give the V-417.xx6211E1 to a third party, also include this user manual as well as other relevant information provided by the manufacturer.
- ▶ Only use the device on the basis of the complete user manual. Missing information due to an incomplete user manual can lead to serious or fatal injuries and damage to equipment.
- ▶ Only install and operate the V-417.xx6211E1 after you have read and understood this user manual.

3.3.2 General Personnel Qualification

The V-417.xx6211E1 may only be installed, started up, operated, maintained, and cleaned by authorized and appropriately qualified personnel.

4 Product Description

4.1 Model Overview

High-load linear stage; ironless 3-phase linear motor to 325 V; 102 to 813 mm travel range (see table); 450 N load capacity; 2000 mm/s maximum velocity; incremental linear encoder, 20 µm signal period, sin/cos, 1 V peak-peak; drag chain

| Product number | Travel range |
|----------------|--------------|
| V-417.056211E1 | 102 mm (4") |
| V-417.096211E1 | 204 mm (8") |
| V-417.136211E1 | 305 mm (12") |
| V-417.176211E1 | 407 mm (16") |
| V-417.216211E1 | 508 mm (20") |
| V-417.256211E1 | 610 mm (24") |
| V-417.336211E1 | 813 mm (32") |

4.2 Product Labeling

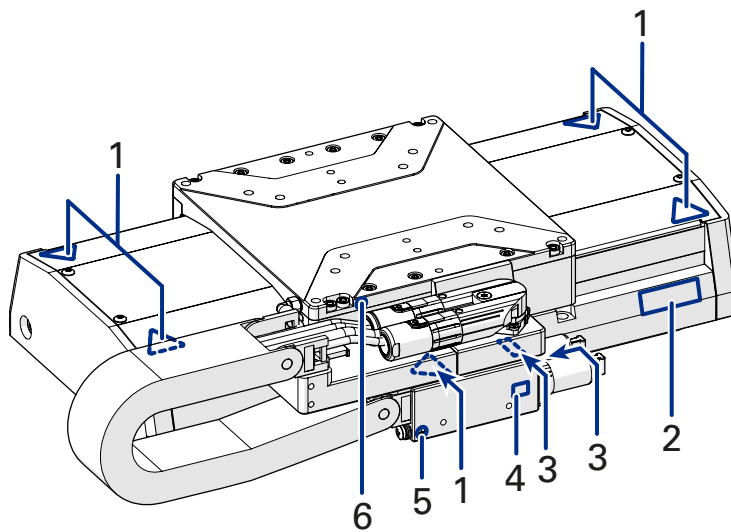


Figure 1: Product labeling on the V-417.xx6211E1

1. Warning symbol: Risk of crushing
2. Type plate
3. Connector labeling
4. Warning symbol: Hot surface
5. Optional protective earth connector
6. Functional earth

4.2.1 Type Plate

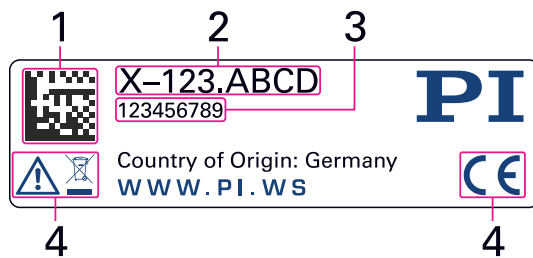


Figure 2: Type plate of the V-417.xx6211E1

1. Data matrix code (example; contains the serial number)
2. Product number (example)
3. Serial number (example), individual for each V-417.xx6211E1
4. Warning and conformity symbols ([old equipment disposal \(p. 7\)](#), [CE mark \(p. 6\)](#))

4.3 Overview

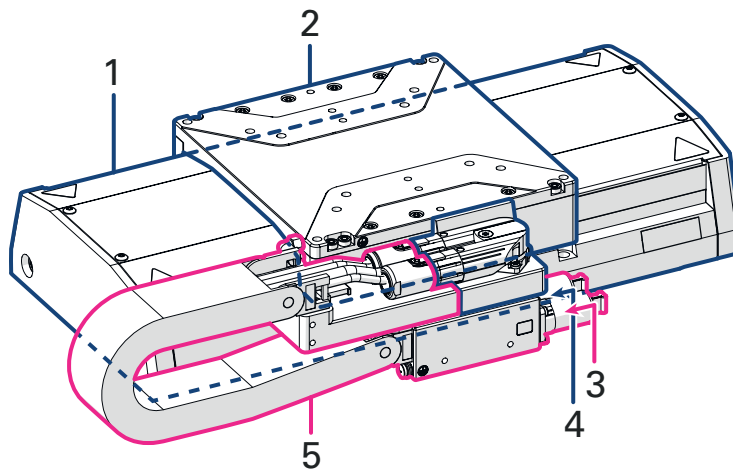


Figure 3: Elements of the V-417.xx6211E1

1. Base body with drive
2. Motion platform
3. Drive and linear encoder connector
4. Purge air connector
5. Drag chain

4.3.1 Base Body

The base body is the basis of the positioner. The V-417.xx6211E1 [is mounted onto a surface via the base body \(p. 18\)](#).

The base body comprises the following subassembly (subassemblies):

Reference switch

The [reference switch \(p. 36\)](#) is a sensor whose fixed position serves as the reference point for incremental sensor signals.

Limit switches

The [limit switches \(p. 36\)](#) are sensors at each end of the travel range that enable the electronics to abort motion in order to prevent the motion platform from colliding with the mechanical hard stop.

Incremental linear encoder

The V-417.xx6211E1's linear encoder is an incremental sensor: It measures the position of the motion platform relative to a known reference point. Linear encoders measure the actual position directly. Therefore, drive errors such as nonlinearity, backlash or elastic deformation cannot influence position measuring.

4.3.2 Drive

The drive of the V-417.xx6211E1 is a 3-phase magnetic linear motor. The linear motor transfers the drive force to the motion platform directly and free of friction.

Motor

The motor generates the force required to move the fixed load.

In the case of the V-417.xx6211E1, overheating is prevented using [temperature sensors \(p. 37\)](#).

4.3.3 Drag Chain

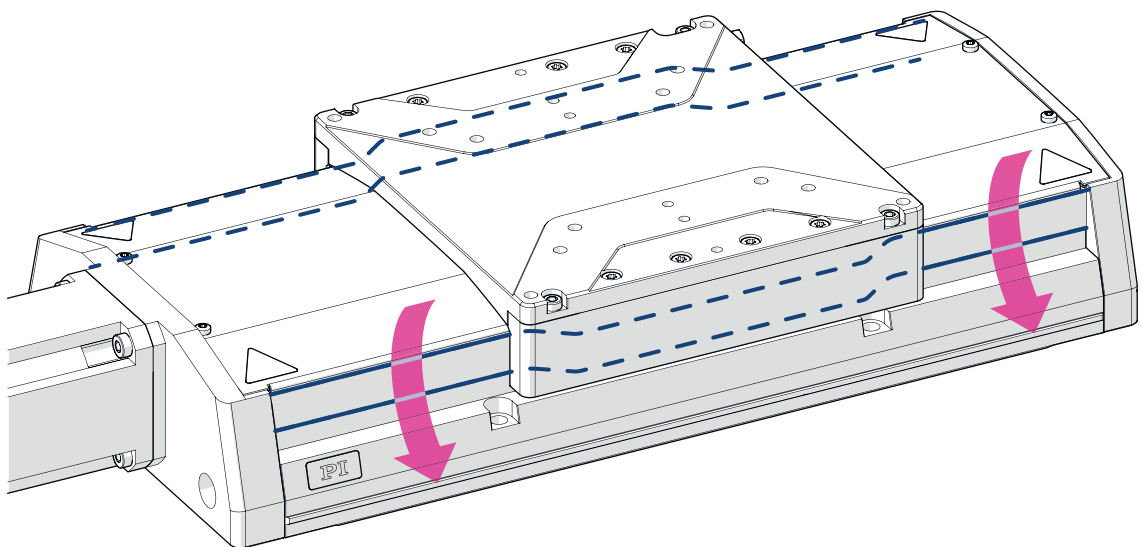
The drag chain (also: energy chain or energy supply chain) guides and protects the V-417.xx6211E1's flexible cables and lines.

4.3.4 Purge Air System

The purge air system protects the drive and guides of the V-417.xx6211E1 against surrounding dust.

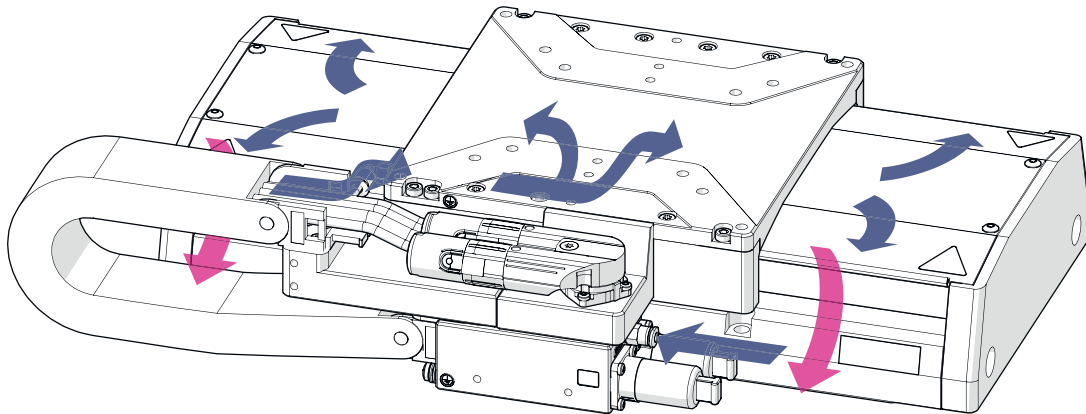
The purge air system comprises the following subassembly (subassemblies):

Passive dust protection



The passive dust protection consists of covering strips that seal the openings on the side of the V-417.xx6211E1's base body and therefore reduces the amount of dust that can penetrate.

Active dust protection



The active dust protection consists of a purge air connector on the base body of the V-417.xx6211E1, which creates a slight overpressure in the V-417.xx6211E1 and therefore reduces the amount of dust that can penetrate.

4.4 Direction of Motion

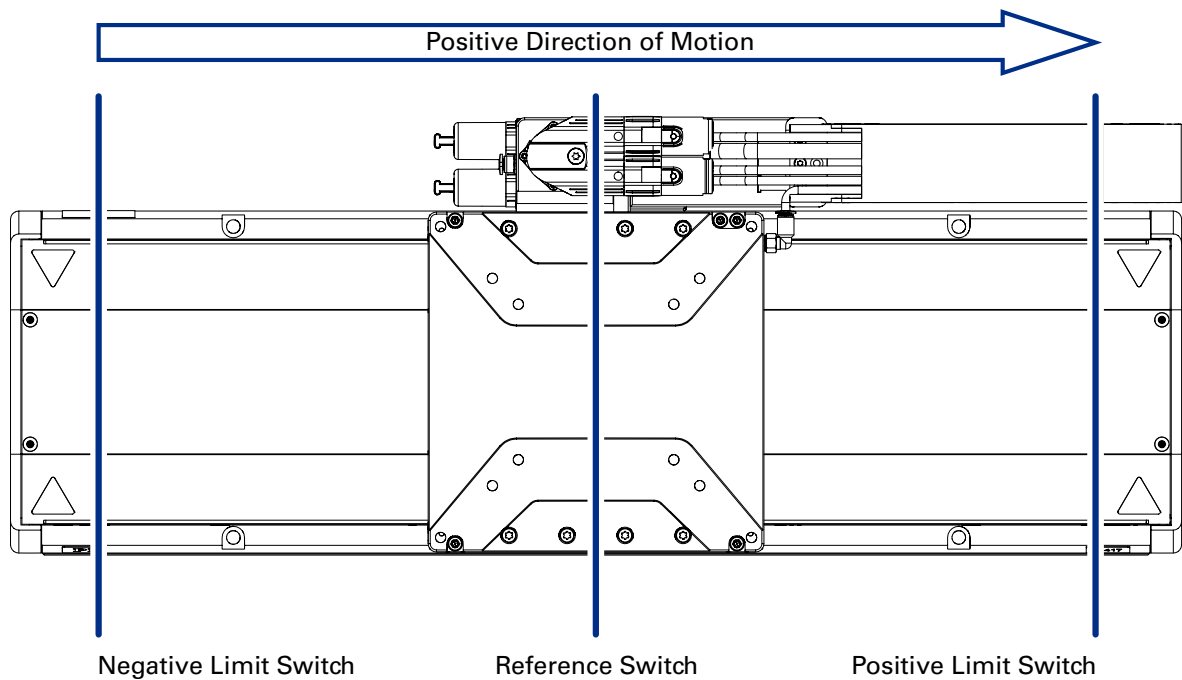


Figure 4: Schematic representation of the direction of motion, reference switch, and limit switches. The exact position of the reference switch and the limit switches may vary.

4.5 Scope of Delivery

| Product number | Description |
|--|--|
| V-417.xx6211E1 | Linear stage according to the order (p. 10) |
| For V-417.xx6211E1 with xx = 17, 21, 25, 33: V417B0029 | Transport means: Carrying aid for the V-417.xx6211E1 |
| For V-417.xx6211E1 with xx = 05, 09, 13, 17: V417B0015 | Mounting kit for mounting the V-417.xx6211E1, consisting of <ul style="list-style-type: none"> ■ 12 socket head screws, ISO 4762 M6×30 ■ 2 dowel pins, ISO 2338 4h8×12 ■ 12 flat washers, ISO 7092, D11 d6.4 h1, 6 mm |
| For V-417.xx6211E1 with xx = 21, 25, 33: V417B0016 | Mounting kit for mounting the V-417.xx6211E1, consisting of <ul style="list-style-type: none"> ■ 20 socket head screws, ISO 4762 M6×30 ■ 2 dowel pins, ISO 2338 4h8×12 ■ 20 flat washers, ISO 7092, D11 d6.4 h1, 6 mm |
| MP188EK | Short instructions for high-load positioners with electric motors |
| Declaration of Incorporation of Partly Completed Machinery | Declaration of incorporation for the product according to the Machinery Directive (also included (p. 6) in this user manual) |

4.6 Optional Accessories

The following articles are not in the scope of delivery of the V-417.xx6211E1 and must be ordered separately, if required.

Drag chains for XY mounting

| Lower linear stage | Travel range of the lower linear stage / mm | Suitable drag chain |
|--------------------|---|---------------------|
| V-417.05xxxxE1 | 102 | V-417E1XYH05 |
| V-417.09xxxxE1 | 204 | V-417E1XYH09 |
| V-417.13xxxxE1 | 305 | V-417E1XYH13 |
| V-417.17xxxxE1 | 407 | V-417E1XYH17 |
| V-417.21xxxxE1 | 508 | V-417E1XYH21 |
| V-417.25xxxxE1 | 610 | V-417E1XYH25 |
| V-417.33xxxxE1 | 813 | V-417E1XYH33 |

To order, contact our [customer service department \(p. 7\)](#).

4.7 Suitable Electronics

The V-417.xx6211E1 must be connected to suitable electronics that supply the necessary voltage for operating and if required, to evaluate the sensor and limit switch signals. The following electronics are suitable:

| Product number | Description |
|----------------|---|
| G-901.R519[x] | ACS controller with ACS driver module, 2 / 3 / 4 axes, intermediate circuit voltage 96 V / 2000 W |
| On request | ACS modular controller |
| | Also compatible with other 3rd-party controllers and servo drivers |

Note that the cables required for connecting the V-417.xx6211E1 to the electronics must be ordered separately.

To order, contact our [customer service department \(p. 7\)](#).

5 Unpacking

The V-417 is delivered with the transport safeguard installed.

NOTICE



Mechanical overload due to incorrect handling!

Impermissible mechanical overload caused by lifting the V-417.xx6211E1 improperly could cause deformation or damage to the V-417.xx6211E1.

- ▶ Always use the carrying aid supplied to lift and transport the V-417.xx6211E1.



CAUTION



Risk of crushing by moving parts!

Risk of minor injuries from crushing between the moving parts of the V-417.xx6211E1 or the load and a fixed part or obstacle.

- ▶ Transport the V-417.xx6211E1 only when the transport safeguard is attached.
- ▶ Bring the V-417.xx6211E1 to the intended place of use. If the V-417.xx6211E1 was supplied with a carrying aid: Use the carrying aid to transport the V-417.xx6211E1.
- ▶ Remove the transport safeguard afterwards.

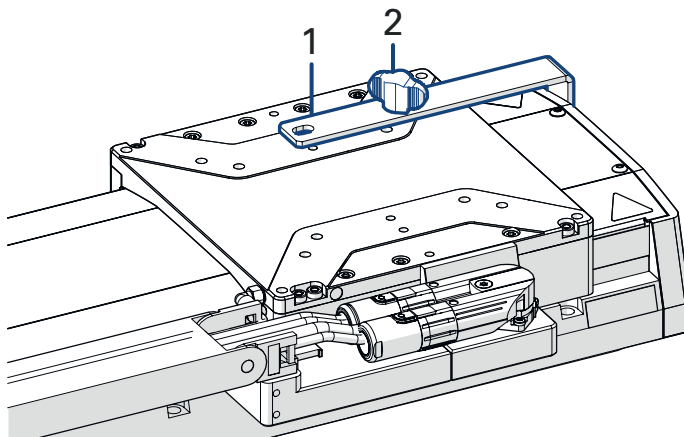
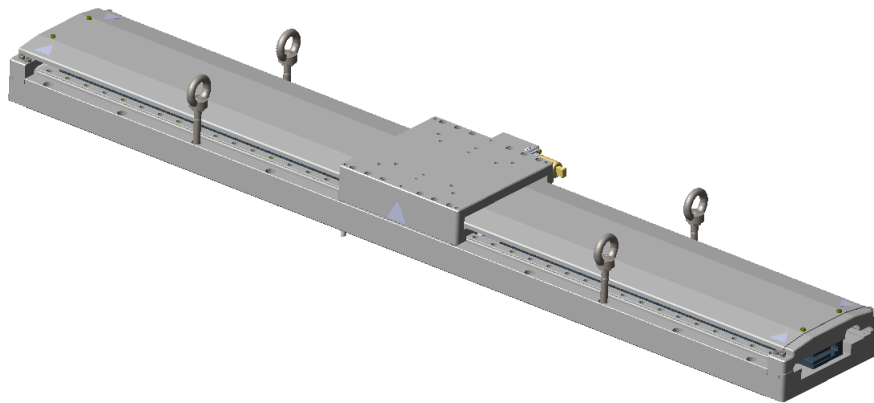


Figure 5: V-417.xx6211E1 with transport safeguard

1. Transport safeguard
2. Wing screw with M6×10 thread

Unpack the V-417.xx6211E1 and remove the transport safeguard

1. Unpack the V-417.xx6211E1 with care.
2. Compare the contents with the scope of delivery according to the contract and the delivery note.
3. Inspect the contents for signs of damage. If any parts are damaged or missing, contact our [customer service department \(p. 7\)](#) immediately.
4. If the V-417.xx6211E1 was supplied with a carrying [aid \(p. 14\)](#): Use the carrying aid to transport the V-417.xx6211E1 to the intended place of use (eyebolts):
 - a) Insert two eyebolts each into the M8 threaded holes provided in front of and behind the motion platform of the V-417.xx6211E1 (as shown in the figure).



- b) Screw the eyebolts into the M8 threaded holes.
- 5. If the V-417.xx6211E1 was supplied with ESD protective caps on the connectors: Do **not** remove the ESD protective caps.
- 6. Remove the carrying aid (if necessary) and transport safeguard **after** transporting the V-417.xx6211E1 to its intended place of use:
 - a) Remove the carrying aid: Unscrew the eyebolts from the M8 threaded holes.
 - b) Remove the transport safeguard: Unscrew and remove the wing screw and remove the metal safeguard.
- 7. Keep the carrying aid and the transport safeguard in case the V-417.xx6211E1 needs to be transported again later.
- 8. Keep all packaging materials in case the product needs to be returned.

6 Installation

6.1 Mounting the V-417.xx6211E1



CAUTION



Risk of crushing by moving parts!

Risk of minor injuries from crushing between the moving parts of the V-417.xx6211E1 or the load and a fixed part or obstacle.

- ▶ Use safeguards to protect limbs in areas where they could be caught by moving parts.
- ▶ Maintain the safety distances according to DIN EN ISO 13857 when installing protective structures.

NOTICE



Damage due to collisions!

Collisions can damage the V-417.xx6211E1, the load to be moved, and the surroundings.

- ▶ Make sure that collisions are not possible between the V-417.xx6211E1, the load to be moved, and the surroundings in the motion range of the V-417.xx6211E1.
- ▶ Do not place any cables or other objects in areas where they could be caught by moving parts.

NOTICE



Damage due to mechanical stress on the cable!

The cable will break from excessive bending or crushing. A broken cable will lead to failure of the V-417.xx6211E1 or damage to the V-417.xx6211E1 or the electronics.

- ▶ Install the V-417.xx6211E1 so that the cable cannot be bent or crushed too strongly.

6.1.1 Mounting the V-417.xx6211E1 from Above

Overview

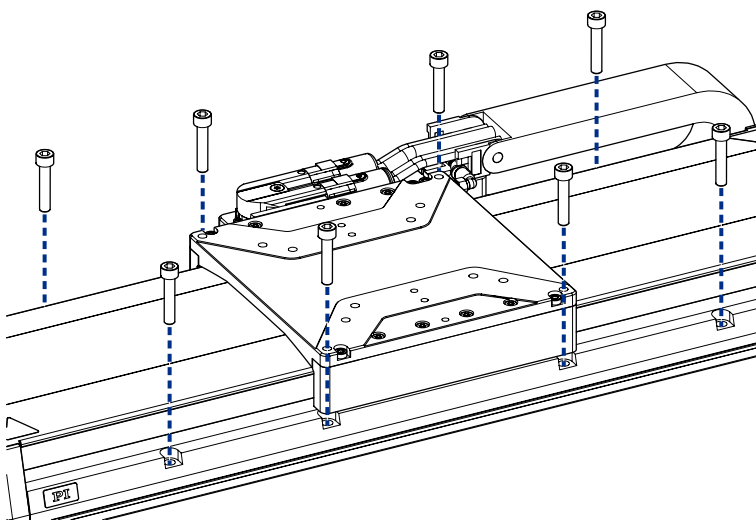


Figure 6: Mounting the V-417.xx6211E1 onto an underlying surface

Tools and Accessories

- [Mounting kit for mounting the V-417.xx6211E1 \(p. 14\)](#)

- Suitable torque wrench

Requirements

- ✓ You have read and understood the [general safety instructions \(p. 8\)](#).
- ✓ You have provided a suitable underlying surface with the holes necessary for the screws and if required, locating pins. For the position and depth required for the holes, see ["Dimensions" \(p. 40\)](#).
 - The surface flatness is $\leq 2 \mu\text{m}$.
 - For applications with large temperature fluctuations: The surface should have the same or similar thermal expansion properties as the V-417.xx6211E1.
- ✓ You have accounted for the space required to route cables according to regulations and without bending them.
 - The cable routing does **not** obstruct the motion of the V-417.xx6211E1.
 - The cable does **not** rub against sharp edges during movements of the V-417.xx6211E1.
- ✓ You [removed \(p. 16\)](#) the carrying aid (if necessary) and the transport safeguard.

Mounting the V-417.xx6211E1 onto an Underlying Surface

1. If necessary: Insert the locating pins into the corresponding holes in the underlying surface.
2. Align the V-417.xx6211E1 on underlying surface so that the corresponding mounting holes in the V-417.xx6211E1 and underlying surface in line.
3. Put the V-417.xx6211E1 onto the underlying surface so that the locating pins can be inserted into the corresponding locating holes of the V-417.xx6211E1.
4. If necessary: Allow access to the mounting holes in the base body of the V-417.xx6211E1. Measure:
 - [Push the motion platform by hand \(p. 28\)](#)
5. If necessary, use a flat washer with each screw and insert the screws through the washer into the mounting hole.
6. Tighten the screws in all accessible mounting holes completely.
Recommended torque: 3 Nm
7. If necessary: Repeat steps 4 to 6 for all concealed mounting holes.
8. Check that the V-417.xx6211E1 is fixed firmly to the underlying surface.

6.2 Connecting the V-417.xx6211E1 to the Protective Earth Conductor

The V-417.xx6211E1 must be connected to the protective earth conductor via the drive connector. For this purpose, the protective earth connector of the motor plug on the drive electronics side must be connected to an earth connection.

It is only necessary to connect the V-417.xx6211E1's base body to the protective earth conductor when the following condition is met:

- The electronics do not guarantee safe connection of the drive connector to the ground potential.

The following description offers an example of how to connect the protective earth conductor to the base body of the V-417.xx6211E1.

**DANGER****Risk of electric shock if the protective earth conductor is not connected!**

If the protective earth conductor is missing or not properly connected, risk of dangerous touch voltages on the V-417.xx6211E1 in the event of malfunction or failure of the system. If there are touch voltages, touching the V-417.xx6211E1 leads to serious injuries or death by electric shock.

- ▶ Connect the V-417.xx6211E1 to a protective earth conductor before startup.
- ▶ Do not remove the protective earth conductor during operation.
- ▶ If the protective earth conductor has to be removed temporarily (e.g., for modifications), reconnect the V-417.xx6211E1 to the protective earth conductor before restarting.

Information

- ▶ Pay attention to the applicable standards for connecting the protective earth conductor.

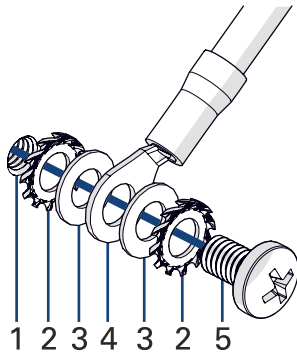
Overview

Figure 7: Protective earth connector on the V-417.xx6211E1

1. Protective earth connector on the V-417.xx6211E1 indicated by the protective earth symbol
2. Lock washer
3. Flat washer
4. Cable lug of the protective earth conductor
5. Screw, M4x8 ISO 7045

Tools and Accessories

- Suitable protective earth conductor:
 - Cable cross section $\geq 0.75 \text{ mm}^2$
 - Contact resistance $< 0.1 \text{ } \Omega$ at 25 A at all points relevant for attaching the protective earth conductor
- Suitable screwdriver
- Optional: Suitable aid (e.g., liquid adhesive) for securing the screw connection

Requirements

- ✓ You have read and understood the [general safety instructions \(p. 8\)](#).

Connecting the V-417.xx6211E1's Base Body to the Protective Earth Conductor

1. If necessary, attach a suitable cable lug to the protective earth conductor.
2. Attach the cable lug of the protective earth conductor to the protective earth connector of the V-417.xx6211E1 as shown in the illustration.
3. Tighten the screw with a torque of 1.2 Nm to 1.5 Nm.

4. Make sure that the contact resistance is $<0.1 \Omega$ at 25 A at all points relevant for attaching the protective earth conductor.
5. If there is any vibration in your application, secure the screw connection for the protective earth conductor in a suitable manner (e.g., with liquid adhesive) to prevent it from unscrewing by itself.

6.3 Building a Multi-Axis System

NOTICE



Impermissibly high load on the positioners!

In a multi-axis system, the stage used for the upper axis must also be moved. Impermissibly high loads impair the motion and can damage the positioners.

- Pay attention to the [maximum permissible forces \(p. 34\)](#) that may act on the motion platform.
- In the case of multi-axis systems, include the masses of the positioners to be moved when calculating the load.

6.3.1 Building an XY Multi-Axis System

The V-417.xx6211E1 can be used in XY systems.

Tools and Accessories

- [Mounting kit for mounting the V-417.xx6211E1 \(p. 14\)](#)
- Suitable torque wrench
- V-417.E1XYHxx drag chain

Requirements

- ✓ You have read and understood the [general safety instructions \(p. 8\)](#).
- ✓ The lower V-417.xx6211E1 is properly fixed [on an underlying surface \(p. 18\)](#).
- ✓ You have accounted for the space required to route cables according to regulations and without bending them.
- ✓ The positioners are not connected to the electronics.

Building an XY Multi-Axis System

1. Proceed as described in the manual of the V-417.E1XYHxx drag chain (V417UM0001).

6.4 Mounting the Load

NOTICE



Impermissibly high load on the V-417.xx6211E1

An impermissibly high load on the V-417.xx6211E1 impairs the motion and can damage the V-417.xx6211E1.

- Pay attention to the [maximum permissible forces \(p. 34\)](#) that may act on the V-417.xx6211E1.
- In the case of multi-axis systems, include the masses of the positioners to be moved when calculating the load.

NOTICE**Excessively long screws and locating pins**

Screws and locating pins that are inserted too deeply can damage the V-417.xx6211E1.

- ▶ Pay attention to the depth of the mounting and locating holes.
- ▶ Only use screws and locating pins of the correct length for the respective mounting holes.

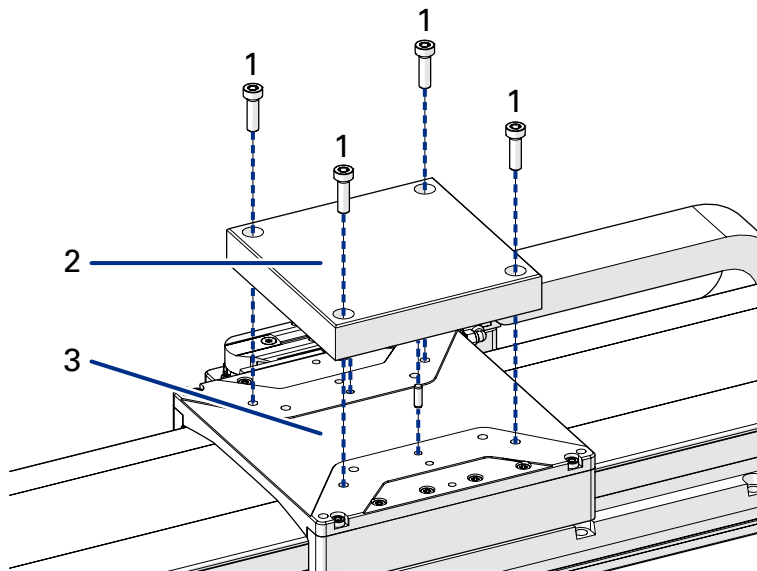
Overview

Figure 8: Mounting the load onto the V-417.xx6211E1

1. Screws
2. Load
3. Motion platform of the V-417.xx6211E1

Tools and Accessories

- At least 3 screws with suitable [dimensions \(p. 40\)](#)
- Suitable tool for tightening the screws
- Optional: 2 suitably dimensioned dowel pins as locating pins for aligning the load on the V-417.xx6211E1

Requirements

- ✓ You have read and understood the [general safety instructions \(p. 8\)](#).
- ✓ You have mounted the V-417.xx6211E1 [onto the surface \(p. 18\)](#) properly.
- ✓ The V-417.xx6211E1 is not connected to the electronics.
- ✓ You have prepared the load so that it can be fixed to the mounting holes in the motion platform:
 - The gap between the center of gravity of the load and the center of the motion platform is as small as possible in all directions.
 - At least three points are provided for fixing the load on the motion platform.

Mounting the Load onto the V-417.xx6211E1

1. If necessary: Insert the locating pins into the corresponding holes in the motion platform.
2. Align the load on the motion platform so that the mounting holes selected in the platform can be used to mount the load.

3. Place the load onto the motion platform so that the locating pins are inserted into the corresponding locating holes in the load.
4. Tighten the screws in all mounting holes.
Respect the tightening torques for screws
5. Check that the load is sitting firmly on the motion platform.

6.5 Connecting the V-417.xx6211E1

NOTICE



Damage due to incorrect connection of the V-417.xx6211E1!

Connecting unsuitable electronics or the wrong cable can lead to damage to the V-417.xx6211E1 or the electronics.

- ▶ Make sure that the electronics support the drive type of the V-417.xx6211E1 and have been configured accordingly.
- ▶ Use cables from PI miCos only to connect the V-417.xx6211E1 to the electronics.
- ▶ Pay attention to correct [pin assignment \(p. 41\)](#).

Tools and Accessories

- [Suitable electronics \(p. 14\)](#)
- Cable set suitable for the electronics used
- If necessary: Suitable screwdriver for the locking screws of the connectors.
- Optional: Purge air connector with the following properties:
Pressure: 2 to 6 bar (200 to 600 kPa); purge air hose: outer diameter 4 mm; air quality as stated in the [specifications \(p. 34\)](#)

Requirements

- ✓ You have read and understood the [general safety instructions \(p. 8\)](#).
- ✓ If necessary: The V-417.xx6211E1's base body is connected to the [protective earth conductor \(p. 19\)](#).
- ✓ You have read and understood the user manual for the electronics.
- ✓ You have installed the electronics properly.
- ✓ The electronics are switched off.

Connecting the V-417.xx6211E1

1. If necessary: Remove the ESD protective caps from the connectors of the V-417.xx6211E1.
2. All of the V-417.xx6211E1's connections must be made in the following order:
 - a) Optional: Purge air connector
Permissible pressure: 2 to 6 bar (200 to 600 kPa)
 - b) Drive connector
 - c) Linear encoder connector
3. Secure the connectors against unintentional removal.

7 Startup and Operation

7.1 Determining the Operating Parameters

Temperature dependency of the nominal current:

It is necessary for the controller to monitor the nominal current to avoid damaging the V-417.xx6211E1. To guarantee this, it is necessary to adjust the nominal current to the ambient temperature at the place of application. See [Calculating the Nominal Current According to the Ambient Temperature \(p. 24\)](#).

7.1.1 Calculating the Nominal Current According to the Ambient Temperature

The nominal current in the [data table \(p. 34\)](#) only applies when operating at room temperature. The nominal current needed for operating the V-417.xx6211E1 must be adjusted when the ambient temperature rises.

Calculating the Nominal Current

1. Calculate the nominal current according to the ambient temperature as follows:

$$I(T) = I(T_{\text{ref}}) \cdot \sqrt{\frac{T_{\text{max}} - T}{T_{\text{max}} - T_{\text{ref}}}}$$

Variables:

$I(T)$ = Nominal current, depending on the ambient temperature T

T = Ambient temperature

$I(T_{\text{ref}})$ = Nominal current, determined at reference temperature T_{ref} , refer to [Specifications \(p. 34\)](#)

T_{ref} = Reference temperature (20 °C)

T_{max} = Maximum temperature of positioner components (110 °C)

The nominal force $F(T)$ at ambience temperature T is:

$$F(T) = F(T_{\text{ref}}) \cdot \left(\frac{I(T)}{I(T_{\text{ref}})} \right)$$

whereby $F(T_{\text{ref}})$ is the nominal force determined at reference temperature T_{ref} , see [Specifications \(p. 34\)](#)

7.2 Starting and Operating the V-417.xx6211E1



DANGER



Risk of electric shock if the protective earth conductor is not connected!

If the protective earth conductor is missing or not properly connected, risk of dangerous touch voltages on the V-417.xx6211E1 in the event of malfunction or failure of the system. If there are touch voltages, touching the V-417.xx6211E1 leads to serious injuries or death by electric shock.

- ▶ Connect the V-417.xx6211E1 to a protective earth conductor before startup.
- ▶ Do not remove the protective earth conductor during operation.
- ▶ If the protective earth conductor has to be removed temporarily (e.g., for modifications), reconnect the V-417.xx6211E1 to the protective earth conductor before restarting.

**CAUTION****Risk of crushing by moving parts!**

Risk of minor injuries from crushing between the moving parts of the V-417.xx6211E1 or the load and a fixed part or obstacle.

- ▶ Use safeguards to protect limbs in areas where they could be caught by moving parts.
- ▶ Maintain the safety distances according to DIN EN ISO 13857 when installing protective structures.

**CAUTION****Risk of catching by moving parts!**

Risk of minor injury if hair, jewelry or clothing get caught by moving parts.

- ▶ Fit safeguards around all areas with moving parts.
- ▶ Never work with the unprotected V-417.xx6211E1 if you have long hair, loose jewelry or clothing.

**CAUTION****Burning due to hot surface!**

The drive of the V-417.xx6211E1 and the surroundings can heat up during operation. Touching the drive and surrounding parts can result in minor injuries from burning.

- ▶ Make sure that the hot drive and the surrounding parts cannot be touched.

NOTICE**Operating voltage excessively high or incorrectly connected!**

Operating voltages that are too high or incorrectly connected can cause damage to the V-417.xx6211E1.

- ▶ Pay attention to the [operating voltage range \(p. 39\)](#), which is specified for the V-417.xx6211E1.
- ▶ Pay attention to correct [pin assignment \(p. 41\)](#).

NOTICE**Unintentional change in position due to missing self-locking!**

The V-417.xx6211E1's drive does not have self-locking. For the models of the V-417 without holding brake, the following therefore applies:

The V-417.xx6211E1 can move unintentionally when the servo control is switched off, e.g., when deactivating the servo mode or switching the electronics off. Unintentional changes in position can damage the V-417.xx6211E1, the load to be moved, and the surroundings.

- ▶ If you want to operate the positioner with a vertically or obliquely aligned motion axis: Attach suitable gravity compensation (not included in the scope of delivery).
- ▶ Before switching off or rebooting the controller, take suitable precautionary measures to ensure that unintentional changes in the position of the motion platform are not possible.

NOTICE**Damage due to collisions!**

Collisions can damage the V-417.xx6211E1, the load to be moved, and the surroundings.

- ▶ Stop the motion immediately if an electronics malfunction occurs.
- ▶ If possible, adapt the travel range limits of your mechanical system in the software that you use for commanding the motion.

NOTICE**Uncontrolled oscillation!**

Oscillation can cause irreparable damage to the V-417.xx6211E1. Oscillation is indicated by a humming noise and can be caused by the following:

- The load and/or dynamics during operation differ considerably from the calibration settings.
- If you notice oscillation, stop the V-417.xx6211E1 immediately.

Requirements

- ✓ You have read and understood the [general safety instructions \(p. 8\)](#).
- ✓ You have [installed \(p. 18\)](#) the V-417.xx6211E1 correctly.
- ✓ The V-417.xx6211E1 is connected to the [protective earth conductor \(p. 19\)](#).
- ✓ If necessary: You have removed the [carrying aid \(p. 16\)](#).
- ✓ You have removed the [transport safeguard \(p. 16\)](#).
- ✓ You have read and understood the user manual for the electronics used.
- ✓ If a digital controller is used: You have read and understood the manual for the PC software used.
- ✓ The electronics and if required, the PC software, have been installed (see the user manual for the electronics).

V-417.xx6211E1 Startup

1. Start the electronics (refer to the user manual for the electronics).
2. Configure the electronics for the V-417.xx6211E1 during startup:
 - Configure the electronics using the parameters of the V-417.xx6211E1.
3. Start a few motion cycles for testing purposes (refer to the user manual for the electronics).

8 Maintenance

For the V-417.xx6211E1, run the maintenance measures specified below on a regular basis. No further maintenance measures are required. There is no need for relubrication as, upon delivery, the guides of the V-417.xx6211E1 are lubricated for life.

NOTICE



Damage due to improper maintenance!

Improper maintenance can lead to misalignment and failure of the V-417.xx6211E1.

- ▶ Loosen screws only according to the instructions in this manual or the instructions of our [customer service department \(p. 7\)](#).

8.1 Maintenance Run

The maintenance run serves to distribute the existing lubricant.

The following intervals for the maintenance run depend on the operating conditions and the period of use:

- After 500 operating hours or at least after one 1 year
- If the V-417.xx6211E1 is moved over a small travel range (<20 % of the entire travel range) during industrial operation: After every 2000 motion cycles

Doing a Maintenance Run

1. Make sure that collisions between the V-417.xx6211E1, the load to be moved, and the surroundings are not possible over the entire travel range of the V-417.xx6211E1. If necessary, remove the load from the V-417.xx6211E1 for the maintenance run.
2. Do a maintenance run over the entire travel range:
 - a) Command the V-417.xx6211E1 to the end of a travel range and from there to the opposite end of the travel range (see manual for the electronics).
 - b) If necessary: Command the V-417.xx6211E1 to a position where the load can be mounted onto the V-417.xx6211E1 again, and [mount the load back onto the V-417.xx6211E1 \(p. 21\)](#).

8.2 Cleaning

NOTICE



Damage due to unsuitable cleaning agents!

Some cleaning agents can cause rusting on the V-417.xx6211E1 or dissolve plastics, paints or adhesives.

- ▶ Do **not** clean with water or acetone.

Auxiliary Materials Required

- Soft, lint-free cloth
- Mild cleaning agent or disinfectant

If you have any questions on the auxiliary materials recommended for the V-417.xx6211E1, contact our [customer service department \(p. 7\)](#).

Requirements

- ✓ You have disconnected the V-417.xx6211E1 from the electronics.

Cleaning the V-417.xx6211E1

1. Dampen the cloth with the cleaning agent or disinfectant.
2. Carefully wipe the surfaces of the V-417.xx6211E1.

8.3 Moving the Motion Platform by Hand

It may be necessary to move the motion platform manually,

- to allow access to the mounting holes in the positioner's base body for the mounting screws,
- to move the motion platform away from the mechanical hard stop and make the V-417.xx6211E1 operational again.

Requirements

- ✓ You have disconnected the V-417.xx6211E1 from the electronics.

Moving the Motion Platform by Hand

1. Exert a steady force on the motion platform to move it.

9 Troubleshooting

| The positioner does not move | |
|--|--|
| Cable not connected correctly | ▶ Check the cable connections. |
| The electronics or mechanics were replaced | ▶ Run the startup (p. 24) once again. |
| Electronics not connected correctly | ▶ Check all connecting cables (p. 23) . |
| Defective electronics | ▶ Check the electronics. |
| Excessive load | <ul style="list-style-type: none"> ▶ Reduce the acceleration and velocity. ▶ Adapt the servo-control parameters, see the user manual for the electronics. ▶ Reduce the load, see "Specifications" (p. 34). |
| Motion platform has triggered the limit switch | <ul style="list-style-type: none"> ▶ If you are using a controller from PI: Switch on the servo mode for the affected axis again in the PC software. ▶ Command the axis to move away from the limit switch. |
| The positioner was connected to the switched-on electronics | ▶ Switch the electronics off and on again or restart them with the RBT command or with the corresponding PC software function. |
| Incorrect configuration | ▶ Check the V-417.xx6211E1's parameter settings in the electronics connected and make the appropriate corrections. |
| Incorrect command or incorrect syntax | ▶ Send the ERR? command in the PI electronics and check the error code . |
| Incorrect axis or channel commanded | ▶ Make sure that the electronics use the correct axis respectively channel identifier. |
| Commanded axis is not referenced | ▶ Do a reference move for the axis as described in the user manual for the controller. |
| Reduced positioning accuracy | |
| Warped base body | ▶ Mount the V-417.xx6211E1 onto an even surface (p. 18) . |
| Increased wear due to small motion over a long period of time | ▶ Perform a maintenance run (p. 27) . |
| Target position is approached too slowly or with overshoot | <ul style="list-style-type: none"> ▶ Check whether the servo control parameter settings correspond to the selected closed-loop control mode; see user manual for the controller. ▶ If necessary, correct the settings of the servo control parameters. |
| The target position is not kept stable due to inappropriately set speed / acceleration | ▶ Correct the corresponding servo control parameter settings (see the user manual for the controller). |
| Uncontrolled oscillation | |
| Large changes to the load or the alignment of the V-417.xx6211E1 | <ul style="list-style-type: none"> ▶ Switch off the servo control system or the controller immediately. ▶ Check whether the servo control parameter settings correspond to the selected closed-loop control mode; see user manual for the controller. |

- ▶ If necessary, correct the settings of the servo control parameters.

If the problem is not listed in the table or cannot be solved as described, contact our [customer service department \(p. 7\)](#).

10 Transportation

Pay attention to the [ambient conditions and classifications \(p. 39\)](#) when transporting the V-417.xx6211E1.



CAUTION



Risk of crushing by moving parts!

Risk of minor injuries from crushing between the moving parts of the V-417.xx6211E1 or the load and a fixed part or obstacle.

- ▶ Transport the V-417.xx6211E1 only with the transport safeguard attached.
- ▶ If the V-417.xx6211E1 was supplied with a carrying aid: Use the carrying aid to transport the V-417.xx6211E1.

NOTICE



Mechanical overload due to transportation without safeguard

An impermissible mechanical load on the V-417.xx6211E1 due to transportation without a safeguard can damage the V-417.xx6211E1 and lead to loss of accuracy.

- ▶ Transport the V-417.xx6211E1 only with the transport safeguard attached.
- ▶ Ship the V-417.xx6211E1 only in the original packaging and with the transport safeguard attached.

NOTICE



Mechanical overload due to incorrect handling!

Impermissible mechanical overload caused by lifting the V-417.xx6211E1 improperly could cause deformation or damage to the V-417.xx6211E1.

- ▶ Always use the carrying aid supplied to lift and transport the V-417.xx6211E1.

10.1 Attaching the Transport Safeguard

Overview

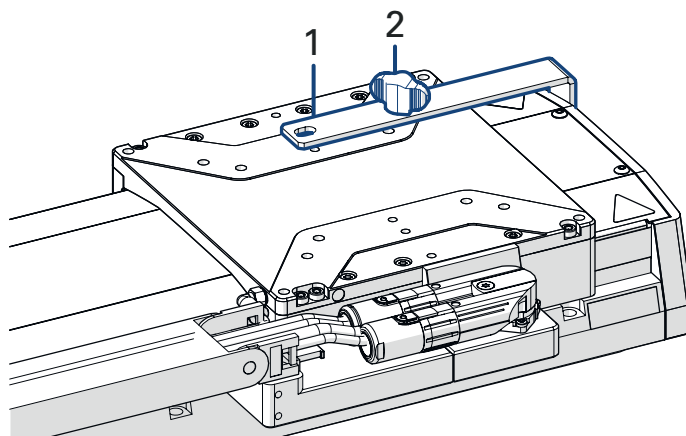


Figure 9: V-417.xx6211E1 with transport safeguard

1. Transport safeguard
2. Wing screw with M6×10 thread

Tools and Accessories

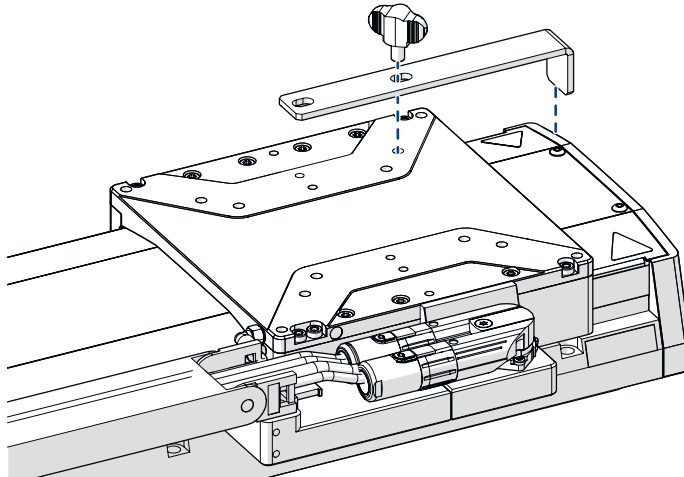
- [Transport safeguard with wing screw \(p. 16\)](#)

Requirements

- ✓ The V-417.xx6211E1 was [disconnected from the electronics \(p. 23\)](#).

Attaching the transport safeguard

1. Push the motion platform to [one end of the travel range \(p. 28\)](#).
2. Attach the transport safeguard to the V-417.xx6211E1 (as shown in the figure).
3. Align the transport safeguard so that one of its holes is over a mounting hole in the motion platform.
4. Use the wing screw to fasten the transport safeguard to the motion platform.



10.2 Attaching the Carrying Aid

Tools and Accessories

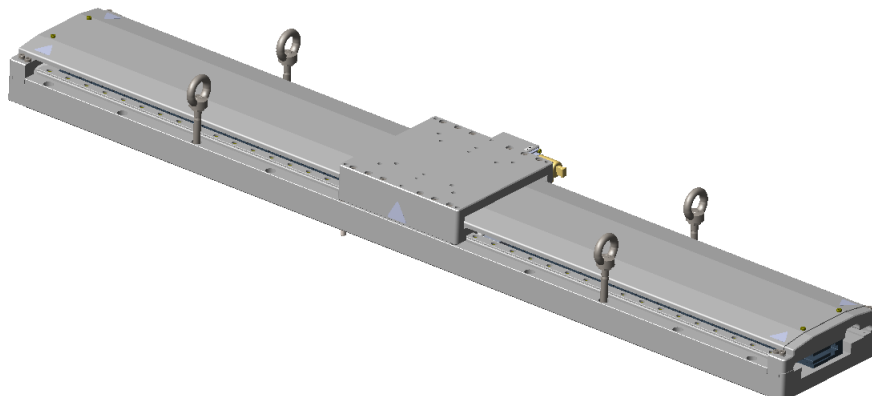
- carrying aid: 4 eyebolts M8x60, in the [scope of delivery \(p. 14\)](#)

Requirements

- ✓ The V-417.xx6211E1 was [disconnected from the electronics \(p. 23\)](#).

Attach the carrying aid to the V-417.xx6211E1

1. Insert two eyebolts each into the M8 threaded holes provided in front of and behind the slider for the load or motion platform of the V-417.xx6211E1.



2. Screw the eyebolts into the M8 threaded holes.

10.3 Packing the V-417.xx6211E1

1. Pack the V-417.xx6211E1 in the original packaging.
2. If the V-417.xx6211E1 is to be sent, use a stable outer box.

11 Technical Data

Subject to change. You can find the latest product specifications on the product web page at www.pi.ws.

11.1 Specifications

11.1.1 Technical Data V-417

| Motion | V-417.xx6211E1 |
|---------------------------------|---|
| Active axes | X |
| Travel range in X | xx = 05: 102 mm xx = 09: 204 mm xx = 13: 305 mm xx = 17: 407 mm xx = 21: 508 mm xx = 25: 610 mm xx = 33: 813 mm |
| Maximum velocity in X, unloaded | 2000 mm/s |
| Straightness / Flatness | xx = 05 (102 mm travel range): $\pm 2.5 \mu\text{m}$ xx = 09 (204 mm travel range): $\pm 4 \mu\text{m}$ xx = 13 (305 mm travel range): $\pm 6 \mu\text{m}$ xx = 17 (407 mm travel range): $\pm 8 \mu\text{m}$ xx = 21 (508 mm travel range): $\pm 9 \mu\text{m}$ xx = 25 (610 mm travel range): $\pm 10 \mu\text{m}$ xx = 33 (813 mm travel range): $\pm 12 \mu\text{m}$ |
| Pitch / Yaw | xx = 05 (102 mm travel range): $\pm 14 \mu\text{rad}$ xx = 09 (204 mm travel range): $\pm 19 \mu\text{rad}$ xx = 13 (305 mm travel range): $\pm 29 \mu\text{rad}$ xx = 17 (407 mm travel range): $\pm 39 \mu\text{rad}$ xx = 21 (508 mm travel range): $\pm 40 \mu\text{rad}$ xx = 25 (610 mm travel range): $\pm 45 \mu\text{rad}$ xx = 33 (813 mm travel range): $\pm 50 \mu\text{rad}$ |

| Positioning | V-417.xx6211E1 |
|---|---|
| Minimum incremental motion in X | 0.005 μm |
| Positioning accuracy in X, uncalibrated | xx = 05 (102 mm travel range): $\pm 4 \mu\text{m}$ xx = 09 (204 mm travel range): $\pm 8 \mu\text{m}$ xx = 13 (305 mm travel range): $\pm 10 \mu\text{m}$ xx = 17 (407 mm travel range): $\pm 12 \mu\text{m}$ xx = 21 (508 mm travel range): $\pm 14 \mu\text{m}$ xx = 25 (610 mm travel range): $\pm 15.5 \mu\text{m}$ xx = 33 (813 mm travel range): $\pm 17 \mu\text{m}$ |
| Bidirectional repeatability in X | 1 μm |
| Limit switches | Hall effect, N/C contact, 5 V, NPN |
| Integrated sensor | Incremental linear encoder |
| Sensor signal | Sin/cos, 1 V peak-peak |
| Sensor signal period | 20 μm |
| Drive properties | V-417.xx6211E1 |
| Drive type | Ironless 3-phase linear motor |
| Nominal voltage | 325 V |
| Nominal current, RMS | 4.4 A |
| Peak current, RMS | 15 A |
| Drive force in X | 87 N |
| Peak force in X | 300 N |
| Force constant | 19.9 N/A |
| Motor constant | 8.4 N/ $\sqrt{\text{W}}$ |
| Time constant | 0.35 ms |
| Resistance phase-phase | 3.6 Ω |
| Inductance phase-phase | 1.2 mH |
| Back EMF phase-phase | 16 V·s/m |
| Pole pitch N-N | 30 mm |

| Mechanical properties | V-417.xx6211E1 |
|-----------------------------------|---|
| Permissible push force in Y | 250 N |
| Permissible push force in Z | 450 N |
| Permissible torque in θ_x | 40 N·m |
| Permissible torque in θ_Y | 30 N·m |
| Permissible torque in θ_Z | 40 N·m |
| Moved mass in X, unloaded | 2800 g |
| Guide | Recirculating ball bearing guide |
| Overall mass | xx = 05 (102 mm travel range): 9.3 kg xx = 09 (204 mm travel range): 11.2 kg xx = 13 (305 mm travel range): 13 kg xx = 17 (407 mm travel range): 14.8 kg xx = 21 (508 mm travel range): 16.6 kg xx = 25 (610 mm travel range): 18.4 kg xx = 33 (813 mm travel range): 21.1 kg |
| Material | Aluminum, black anodized, stainless steel |
| Miscellaneous | V-417.xx6211E1 |
| Operating temperature range | 5 to 40 °C |
| Connector | M15 9-pin (m) |
| Sensor connector | M15 15-pin (m) |
| Recommended controllers / drivers | G-901.R519, ACS modular controller |

11.1.2 Reference Switch Specifications

| | |
|----------------|---|
| Type | Optical sensor, encoder index |
| Supply voltage | +5 V |
| Signal output | 0 V / +5 V (TTL level) |
| Signal logic | Index in middle of the travel range, differential pulse via one sensor signal period. |

11.1.3 Limit Switch Specifications

| | |
|----------------|------------------------|
| Type | Hall sensor |
| Supply voltage | +5 V |
| Signal output | 0 V / +5 V (TTL level) |
| Signal logic | N/C contact, NPN |

11.1.4 Temperature Sensor Specifications

NTC Temperature Sensor

The V-417.xx6211E1 is equipped with an NTC temperature sensor for monitoring the coil temperature. The electrical resistance of the NTC temperature sensor decreases considerably as temperature increases. The controller must cut the power supply to the motor (switching threshold: 511 Ω) when the critical temperature (110 $^{\circ}\text{C}$) is reached.

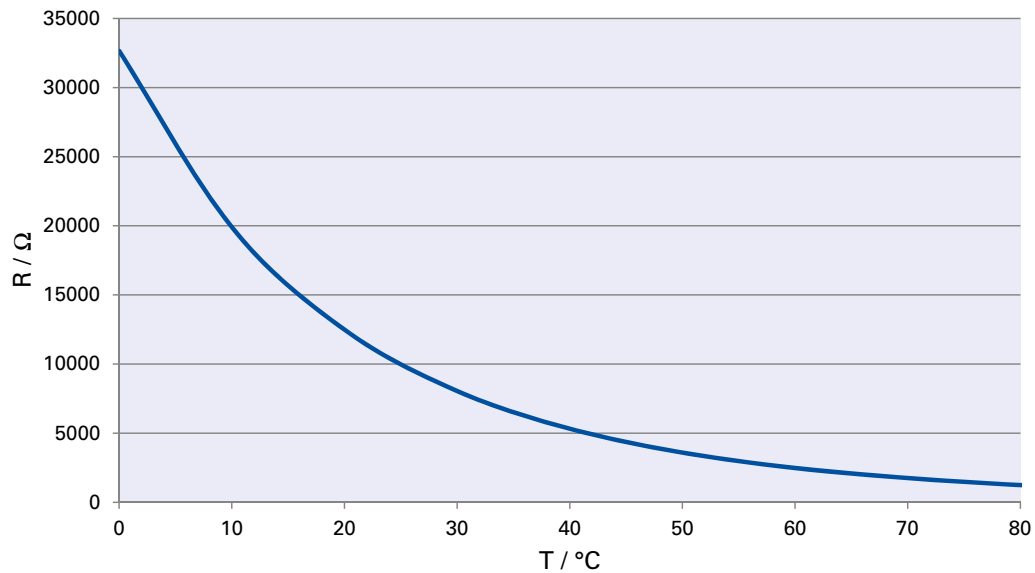


Figure 10: NTC temperature sensor of the V-417.xx6211E1, electrical resistance over temperature, 0 $^{\circ}\text{C}$ to 80 $^{\circ}\text{C}$

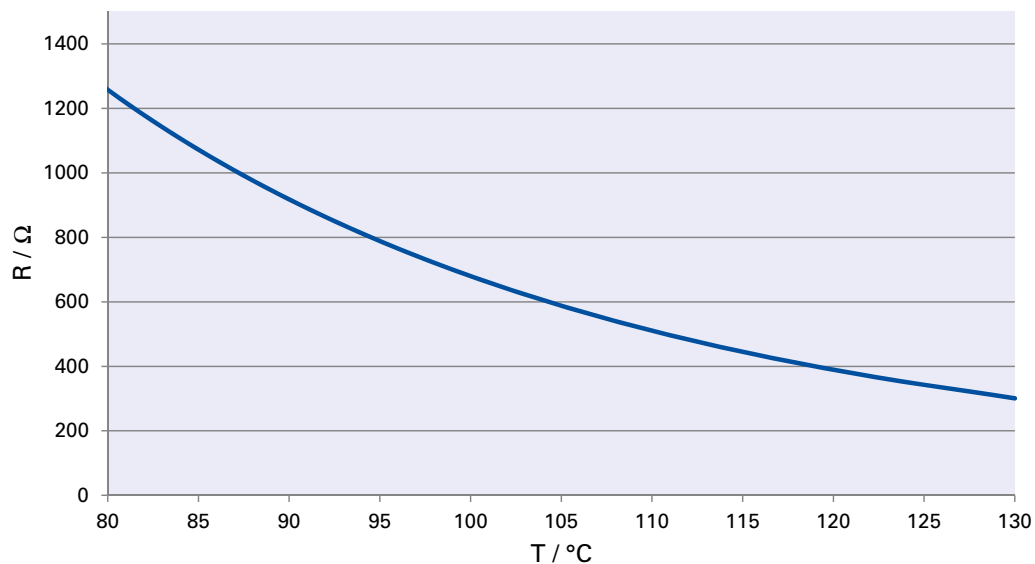


Figure 11: NTC temperature sensor of the V-417.xx6211E1, electrical resistance over temperature, 80 $^{\circ}\text{C}$ to 130 $^{\circ}\text{C}$

| Temperature (°C) | Electrical resistance (Ω) |
|----------------------------|------------------------------------|
| 0 | 32650 |
| 10 | 19900 |
| 20 | 12490 |
| 30 | 8057 |
| 40 | 5327 |
| 50 | 3603 |
| 60 | 2488 |
| 70 | 1752 |
| 80 | 1258 |
| 90 | 918 |
| 100 | 680 |
| 110 (critical temperature) | 511 (switching threshold) |
| 120 | 389 |
| 130 | 301 |


PTC Temperature Sensor

The V-417.xx6211E1 is equipped with a PTC temperature sensor to prevent the motor from overheating. The electrical resistance of the PTC temperature sensor increases considerably into the critical temperature range. The controller must cut the power supply to the motor (switching threshold) when the critical temperature is reached.

| Temperature | Electrical resistance |
|------------------------------|-------------------------------------|
| Up to 90°C | < 250 Ω |
| Up to 105°C | < 550 Ω |
| 110°C (critical temperature) | 1000 Ω (switching threshold) |
| More than 110°C | > 1330 Ω |

11.2 Maximum Ratings

The V-417.xx6211E1 is designed for the following operating data:

| Maximum operating voltage | Operating frequency | Maximum peak current, RMS |
|---|---------------------|---------------------------|
|  | | |
| | – | 15 A |

11.3 Ambient Conditions and Classifications

The following ambient conditions and classifications for the V-417.xx6211E1 must be observed:

| | |
|---|---|
| Area of application | For indoor use only |
| Maximum altitude | 2000 m above msl |
| Relative humidity | Max. 80 % for temperatures to 31 °C, linearly decreasing to 50 % at 40 °C; not condensing |
| Storage temperature | -20 °C to 60 °C |
| Transport temperature | -20 °C to 60 °C |
| Overvoltage category | II |
| Supply voltage fluctuations | Max. ± 10 % of the nominal voltage |
| Protection class | I |
| Degree of pollution | 1 |
| Degree of protection according to IEC 60529 | IP10 |

11.4 Dimensions

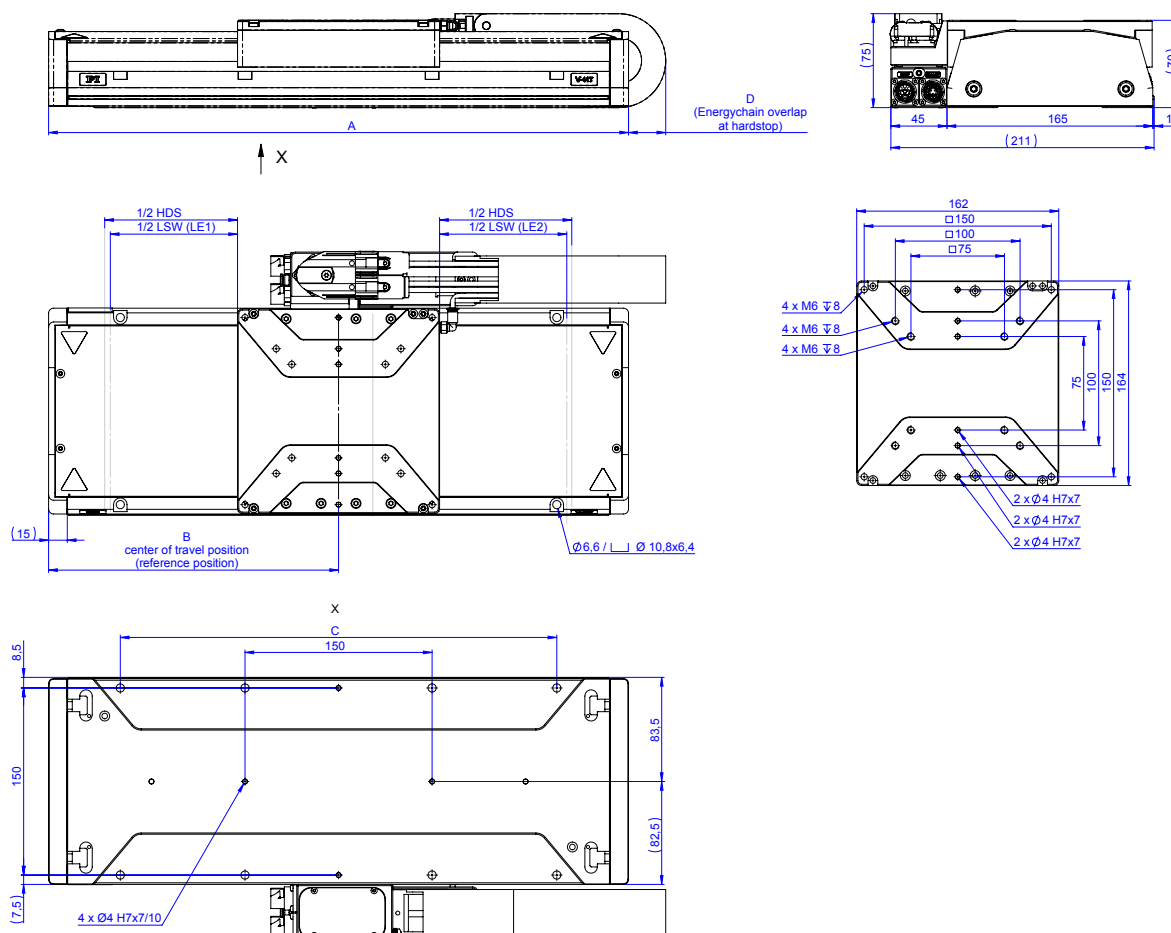


Figure 12: Dimensions of the V-417.xx6211E1

Dimensions in mm. Note that the decimal places are separated by a comma in the drawings.

| BASIS MODELL | TRAVEL NOMINAL | LIMITSWITCH to LIMITSWITCH LSW | | HARDSTOP to HARDSTOP HDS | A | B | C | D |
|--------------|-------------------|--------------------------------------|----------------|--------------------------------|------|-------|-------------------------|----|
| | | V-417.xxx2xxEx | V-417.xxx0xxEx | | | | | |
| V-417.05xxxx | 102 (4") | 102 - 105 | - | 108 | 360 | 180 | 150 | 78 |
| V-417.09xxxx | 204 (8") | 204 - 207 | - | 213 | 465 | 232,5 | 150, 350 | 81 |
| V-417.13xxxx | 305 (12") | 305 - 308 | - | 313 | 565 | 282,5 | 150, 350 | 76 |
| V-417.17xxxx | 407 (16") | 407 - 410 | - | 418 | 670 | 335 | 150, 350, 550 | 79 |
| V-417.21xxxx | 508 (20") | 508 - 511 | - | 518 | 770 | 385 | 150, 350, 550 | 75 |
| V-417.25xxxx | 610 (24") | 610 - 613 | - | 618 | 870 | 435 | 150, 350, 550, 750 | 79 |
| V-417.33xxxx | 813 (32") | 813 - 816 | - | 823 | 1075 | 537,5 | 150, 350, 550, 750, 950 | 78 |

12 Appendix

12.1 Pin Assignment

12.1.1 Drive Connector

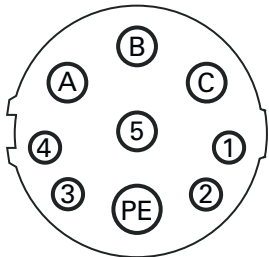


Figure 13: M15 9 (m)

| Pin | Function |
|-----|--------------------------------------|
| A | Phase 1 |
| B | Phase 2 |
| C | Phase 3 |
| PE | Protective earth |
| 1 | Output: Temperature sensor (NTC) (+) |
| 2 | Output: Temperature sensor (NTC) (-) |
| 3 | Not connected |
| 4 | Not connected |
| 5 | Outer shielding |

12.1.2 Sensor Connector

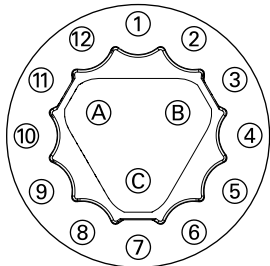


Figure 14: M15 15 (m)

| Pin | Function |
|-----|--------------------------------------|
| 1 | Output: Encoder signal sine (+) |
| 2 | Output: Encoder signal sine (-) |
| 3 | Output: Encoder signal cosine (+) |
| 4 | Output: Encoder signal cosine (-) |
| 5 | Output: Reference switch (+) |
| 6 | Output: Reference switch (-) |
| 7 | Service: Calibration |
| 8 | Negative limit switch |
| 9 | Positive limit switch |
| 10 | Input: Power supply |
| 11 | Ground |
| 12 | Not connected |
| A | Output: Temperature sensor (PTC) (+) |
| B | Output: Temperature sensor (PTC) (-) |
| C | Outer shielding |

Glossary

Lateral Force

Also: Lateral load capacity

Maximum permissible force orthogonally to the positioning direction. This value is directly valid for the motion platform or the slider with mounting rails at the product. The value is reduced when the force acts above the platform/slider.

Limit Switch

Each limit switch sends its signal to the controller on a dedicated line. The controller then interrupts the motion avoiding that the positioner moves until the hard stop and gets damaged. PI positioners have mechanical, noncontact optical or Hall effect limit switches.

Linear Encoder

The linear encoder is an incremental sensor for detecting changes in position. Signals from the sensor are used for axis position feedback. After the controller is switched on, referencing must be done before absolute target positions can be commanded and reached.

Load Capacity

Maximum load in the vertical direction when the V-417.xx6211E1 is mounted horizontally. The contact point of the load is at the center of the motion platform.

Reference Switch

Many of the positioners are equipped with a direction sensing reference switch positioned approx. in the middle of the travel range. It is recommended to approach the reference switch always from the same direction to obtain best position repeatability.

Function: Optical, magnetic

Sensor Resolution

The sensor can be the critical element of position resolution so it may be necessary to specify the sensor resolution separately. Rotary encoder: Impulses per screw rotation. Linear encoder: Smallest motion still detected by the sensor system.

Specifications

The performance specifications are checked before dispatch. The performance specifications apply to room temperature (22 ± 3 °C), systems in closed-loop operation are calibrated at this temperature. It may be necessary to reset the operating parameters when operating at considerably lower or higher temperatures.